

SERIES F15/F30 METAL SEATED FLANGED SERIES

2 PIECE FLANGED FULL PORT
1/2" - 8" (15mm - 200mm)

METAL SEATED FLANGED SERIES BALL VALVES

Flow-Tek, Inc. is proud to offer our uni-directional, metal seated design as an additional option to our full port Flanged Series. This option increases the temperature rating to 750°F (399°C) and enhances wear resistance, while maintaining the proven safety and reliability of existing Flow-Tek valves. With our modular, interchangeable part system, the modification kit can be used in our ASME and DIN valves for sizes ranging from ½" - 8" (DN 15-200). A DIN version FD15/FD30 is also available, please consult your Flow-Tek representative for details.



For specific valve dimensional data and C_v values please refer to F15/30 or FD15/30 brochures which are available at www.Flow-Tek.com.

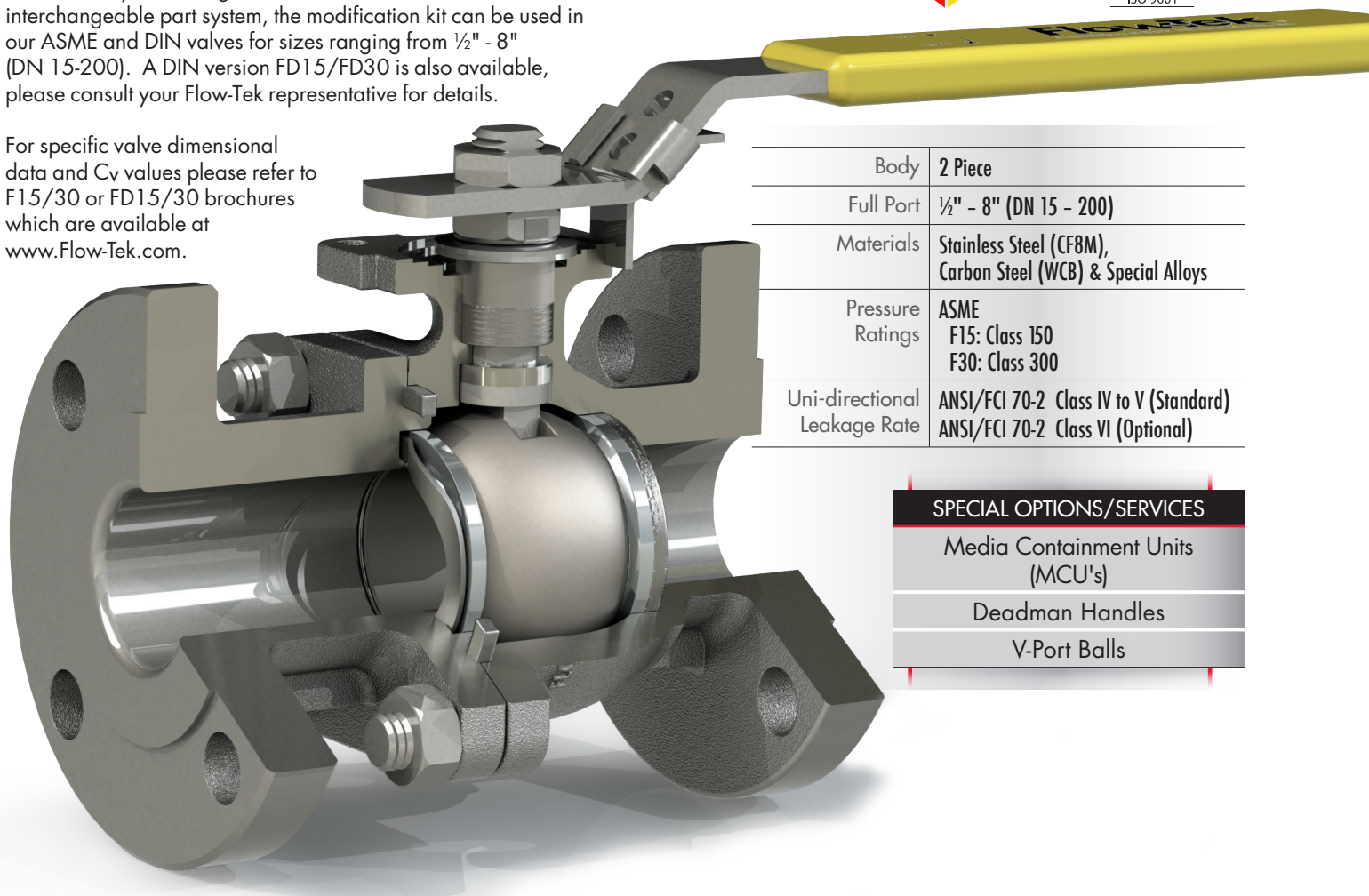
Body	2 Piece
Full Port	½" - 8" (DN 15 - 200)
Materials	Stainless Steel (CF8M), Carbon Steel (WCB) & Special Alloys
Pressure Ratings	ASME F15: Class 150 F30: Class 300
Uni-directional Leakage Rate	ANSI/FCI 70-2 Class IV to V (Standard) ANSI/FCI 70-2 Class VI (Optional)

SPECIAL OPTIONS/SERVICES

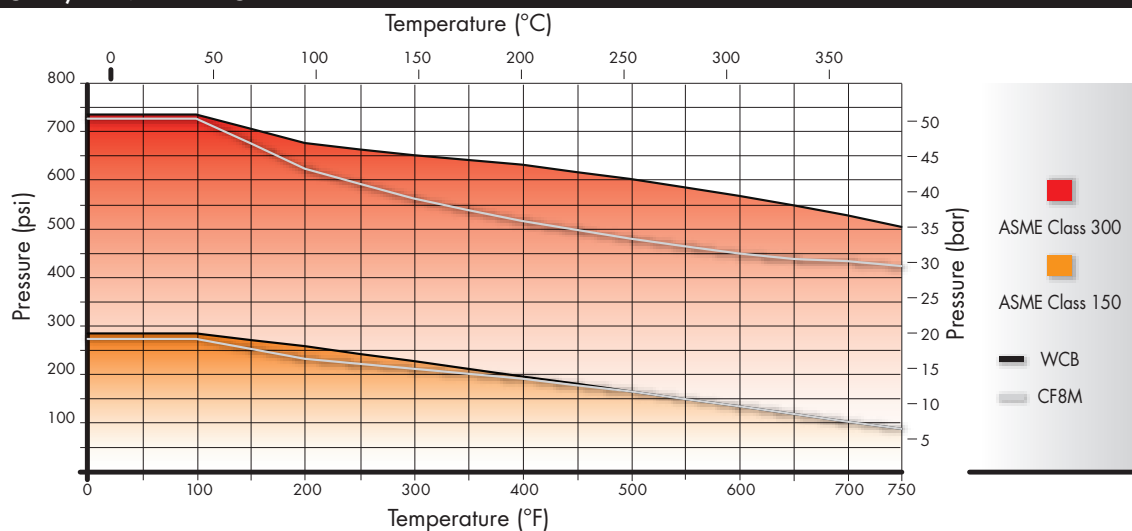
Media Containment Units (MCU's)

Deadman Handles

V-Port Balls



PRESSURE / TEMPERATURE



COMPONENTS & MATERIALS

ITEM / NAME	STAINLESS STEEL	CARBON STEEL	QTY.
1. Body	ASTM A351 Gr CF8M	ASTM A216 Gr WCB	1
2. End Cap	ASTM A351 Gr CF8M	ASTM A216 Gr WCB	1
3. Ball	ASTM A351 Gr CF8M/Chrome Carbide ASTM A351 Gr CF8M/Hard Chrome		1 •
4A. Upstream Seat	ASTM A351 Gr CF8M/Chrome Carbide ASTM A351 Gr CF8M/Stellite® 6		1 •
4B. Downstream Seat	ASTM A351 Gr CF8M/Chrome Carbide ASTM A351 Gr CF8M/Stellite® 6		1 •
5. Stem	SS660 or 17-4 PH		1
6. Body Seal	Spiral Wound (316/Graphite)		1 •
7. Body Nut	ASTM A194 Gr 8	ASTM A194 2H	*
8. Body Stud	ASTM A193 B8	ASTM A193 B7	*
11. Thrust Washer	UNS S21800 (Nitronic® 60)		1 •
14. Stem Packing	Graphite		1 •
15. Packing Gland	ASTM A167 Type 304		1
18. Belleville Washer	SS301		2
19. Tab Lock Washer	SS304		1
23. Travel Stop Sleeve	ASTM A167 Type 304		1
24. Travel Stop Bolt	SS300		1
25. Handle	SS304/ Ductile Iron 2½" and larger		1
26. Lock Nut	ASTM A167 Type 304		2
28. Handle Sleeve	Vinyl 2" [50mm]		1
29. Locking Device	SS304		1
44. Seat Seal	Graphite		1 •
45. Wave Spring	17-7 or Inconel® 718		1 •

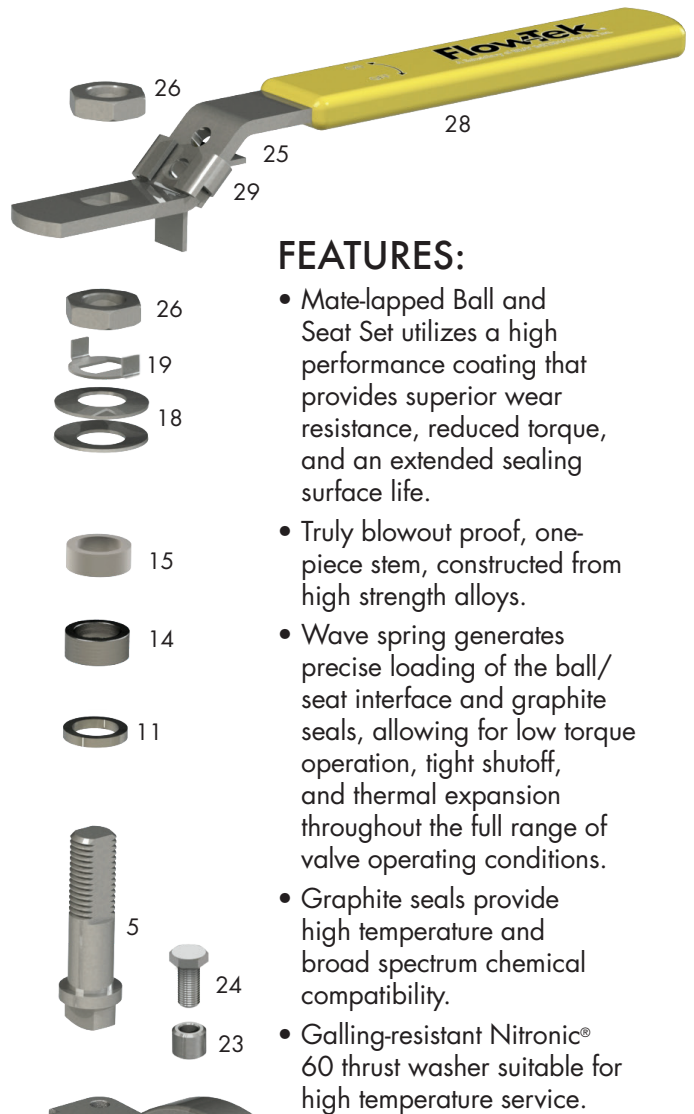
*Quantity depends on valve size.

• Recommended spare parts that are available as a packaged repair kit.

Inconel® is a registered trademark of Inco Alloys International, Inc.

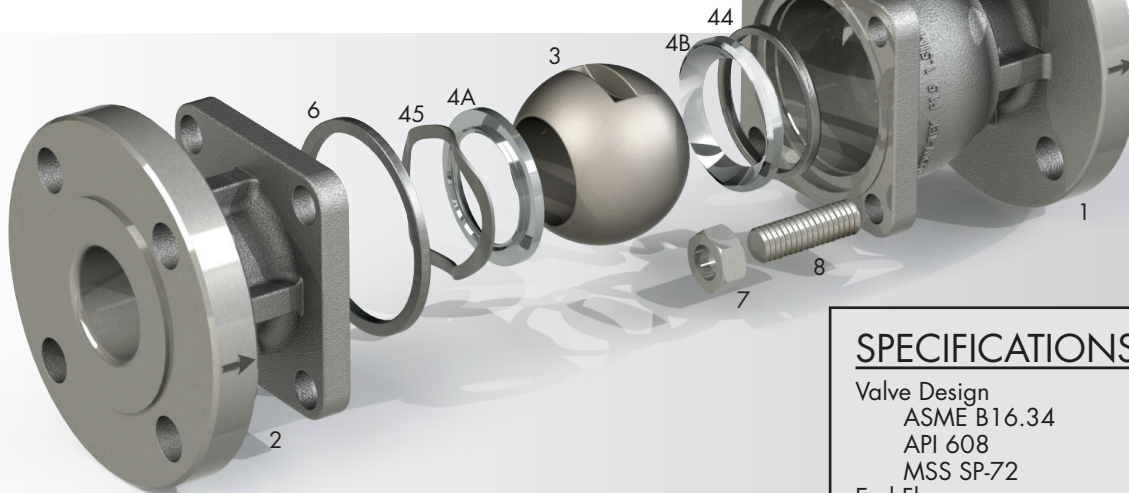
Stellite® is a Registered trademark of Kennametal.

Nitronic® is a Registered trademark of AK Steel.



FEATURES:

- Mate-lapped Ball and Seat Set utilizes a high performance coating that provides superior wear resistance, reduced torque, and an extended sealing surface life.
- Truly blowout proof, one-piece stem, constructed from high strength alloys.
- Wave spring generates precise loading of the ball/seat interface and graphite seals, allowing for low torque operation, tight shutoff, and thermal expansion throughout the full range of valve operating conditions.
- Graphite seals provide high temperature and broad spectrum chemical compatibility.
- Galling-resistant Nitronic® 60 thrust washer suitable for high temperature service.



SPECIFICATIONS

Valve Design
ASME B16.34
API 608
MSS SP-72
End Flanges
ASME B16.5
Face to Face
ASME B16.10

Actuator Interface
ISO 5211
Testing
API 598
MSS SP-61
ANSI/FCI 70-2

For dimensional and flow data refer to the Flow-Tek F15/F30 Brochure.

BRAY INTERNATIONAL, INC

USA

Houston, TX. +281.894.5454

FLOW-TEK

USA

Houston, TX +832.912.2300

CHINA

Hangzhou, Zhejiang +86.571.828.52200

BRAZIL

Paulinia SP-Brazil +55.19.3517.5555

BRAY CONTROLS / FLOW-TEK

BRAY CONTROLS USA

Houston, TX +832.912.2300

ARGENTINA

Buenos Aires + 54.11.4362.0666

BENELUX

Heerhugowaard +31.72.572.1410

BRAZIL

Paulinia SP-Brazil +55.19.3517.6161

CANADA

Montréal +514.344.2729

CHILE

Santiago +56.2739.2966

CHINA

Hangzhou, Zhejiang +86.571.828.52200

GERMANY

Krefeld +49.2151.53360

INDIA

Gujarat +91.2667.664444

MEXICO

Zapopan, Jalisco, +52.33.3836.4460

PACIFIC

Melbourne, Australia +613.9580.9755

PERU

Lima +511.251.0251

POLAND

Oświęcim +48.33.842.1968

UNITED KINGDOM

Inchinnan +44.141.812.5199

VIETNAM

Ho Chi Minh City +84.8.3742.3428

RITEPRO

CANADA,

Montréal +514.324.8900

CHINA,

Hangzhou, Zhejiang +86.571.828.52200

All statements, technical information, and recommendations in this bulletin are for general use only. Consult Flow-Tek representatives or factory for the specific requirements and material selection for your intended application. The right to change or modify product design or product without prior notice is reserved.

Flow-Tek® is a registered trademark of Bray International, Inc. © 2015 Flow-Tek, Inc. All rights reserved.

F2402_EN_MSF15/30_12_2015



▲ FLOW-TEK - USA - Office & Manufacturing

**Global manufacturing,
service around the corner**

To serve you locally, each region maintains a
factory certified sales and service network
for all Bray International products.



▼ WORLD HEADQUARTERS - BRAY INTERNATIONAL, INC. - USA



Flow-Tek®

Subsidiary of BRAY INTERNATIONAL, Inc.

8323 N. Eldridge Pkwy #100 Houston, Texas 77041
832.912.2300 Fax: 832.912.2301 www.flow-tek.com

HOLDFAST

FLUID POWER

Forrestfield

657 Dundas Road,
Forrestfield WA 6058

Phone: 1300 HOLDFAST
Phone: (08) 9359 1795
Fax: (08) 9359 1792
Email: sales@holdfastaust.com.au

Broome

10/274 Port Drive,
Broome WA 6725

Phone: 1300 HOLDFAST
Phone: (08) 9192 6007
Fax: (08) 9192 6067
Email: salesnw@holdfastaust.com.au

Naval Base

1/27 Dooley Street
Naval Base WA 6165

Phone: 1300 HOLDFAST
Phone: (08) 9410 0716
Fax: (08) 9410 1152
Email: sales2@holdfastaust.com.au

1300 HOLDFAST