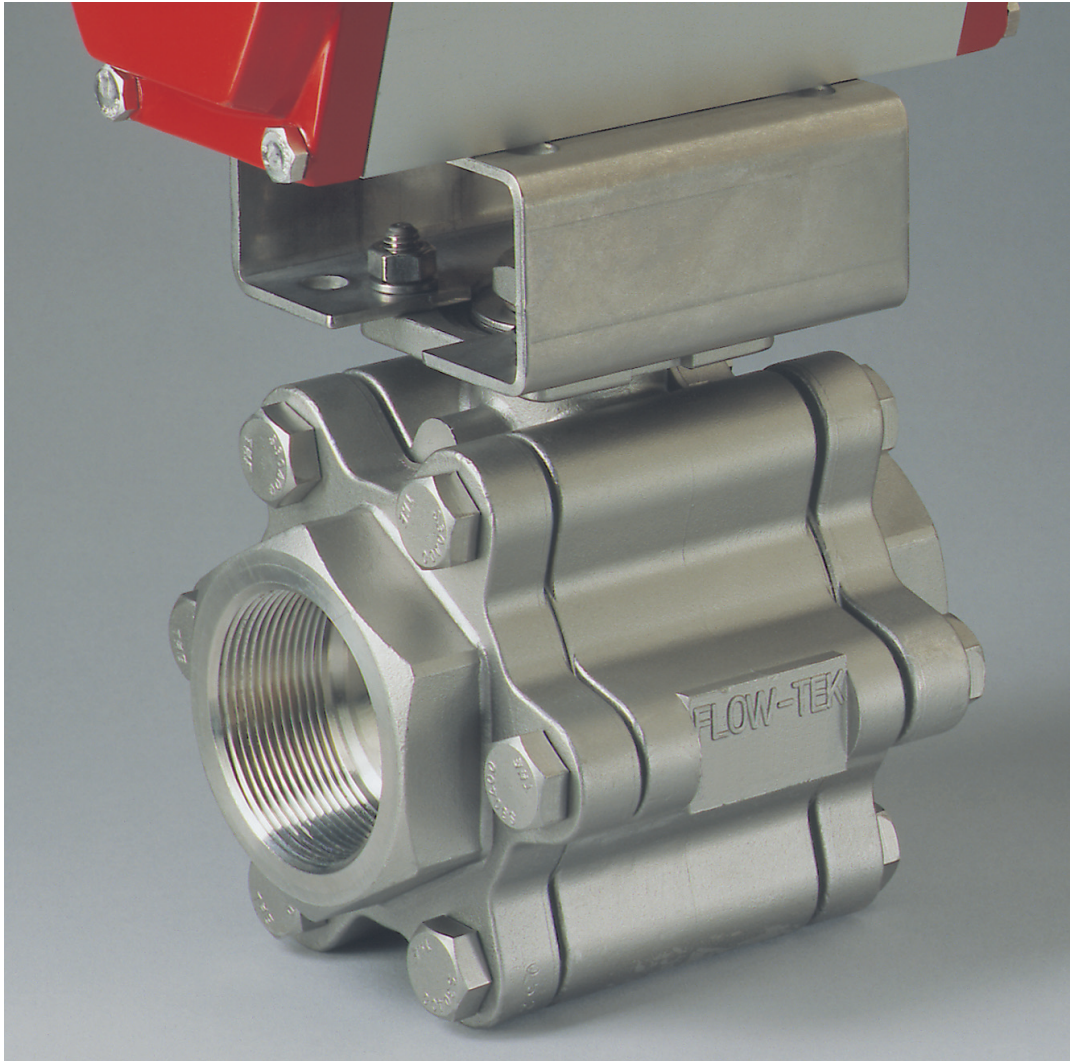


High Pressure 3 Piece Ball Valves Standard Port: 1/4" - 2"

Triad Series

Model HP



Flow-Tek's Triad Series valves are known to be one of the strongest, most robust 3-piece ball valves in the industry. With advanced seat and seal materials, the Triad rating can be extended to handle service pressures to 5000 psi and a temperature of 550°F.

Triad HP valves feature PEEK seats. Flow-Tek's PEEK material is a blend of polyetheretherketone, a highly engineered thermoplastic, with carbon and graphite. PEEK offers excellent abrasion and corrosion resistance under continuous exposure to high pressure and high temperature.

All features of the standard Triad Series are present in the Triad HP design including a heavy robust center section tapped for full hex head cap screws, live loaded stem packing, redundant body seals, anti-static protection and locking safety handles.

As with most Flow-Tek valve designs, the Triad HP comes standard with an integrally cast top flange designed for ease of actuator mounting. The Secure Mount provides positive mounting, eliminating unwanted actuator movement during high cycle or continuous duty applications. Actuators and other accessories can be easily and safely removed while the valve is under full line pressure.

End Connections

- Threaded
- Socket Weld
- Extended Butt Weld

Specifications

Valve Sizes 1/4" through 2"

Threaded End Connections meet
ASME B1.20.1 NPT.

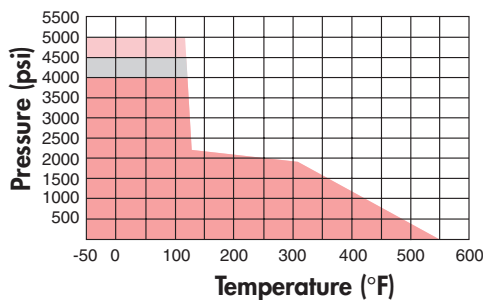
Socket Weld End Connections meet
ASME B16.11.

All Triad Series valves are designed to
meet ASME B16.34.

Valves meet NACE MR0175.

Valve body and end connections are
high quality investment cast and solution
annealed/normalized.

Pressure/Temperature



- 1/4" - 3/4" Valves
- 1" - 1-1/4" Valves
- 1 1/2" - 2" Valves

Note: Carbon Steel valves are
limited to -20°F.

For a full explanation of the valve features
and dimensions please see Flow-Tek's
Triad Series brochure.

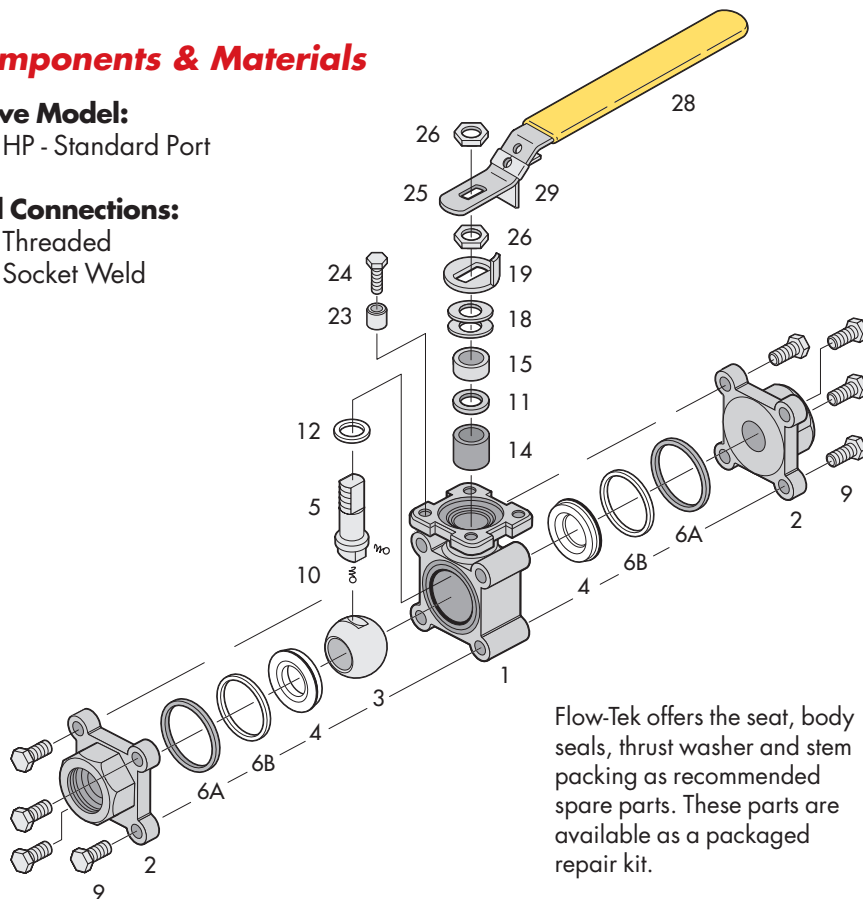
Components & Materials

Valve Model:

- HP - Standard Port

End Connections:

- Threaded
- Socket Weld



Flow-Tek offers the seat, body
seals, thrust washer and stem
packing as recommended
spare parts. These parts are
available as a packaged
repair kit.

Item	Name	Stainless Steel	Carbon Steel	Qty.
1	Body	ASTM A351 Gr CF8M	ASTM A216 Gr WCB	1
2	End Cap	ASTM A351 Gr CF8M	ASTM A216 Gr WCB	2
3	Ball	ASTM A351 Gr CF8M	ASTM A351 Gr CF8M	1
4	Seat	PEEK	PEEK	2
5	Stem	ASTM A479 Type316	ASTM A479 Type316	1
6A	Body Seal	Graphite	Graphite	2
6B	Body Seal	TFM	TFM	2
9	Body Bolt	ASTM A193 B8	ASTM A193 B8	8†
10	Anti-Static Device	SS316	SS316	2
11	Packing Protector	PEEK	PEEK	1
12	Thrust Washer	PEEK	PEEK	1
14	Stem Packing	Graphite	Graphite	1
15	Packing Gland Sleeve	SS304	SS304	1
18	Belleville Washer	SS301	SS301	2
19	Tab Lock Washer	SS300	SS300	1
23	Travel Stop Set Sleeve	SS304	SS304	1
24	Travel Stop Bolt	SS300	SS300	1
25	Handle	SS304	SS304	1
26	Lock Nut	SS304	SS304	2
28	Handle Sleeve	Vinyl	Vinyl	1
29	Locking Device	SS304	SS304	1

†12 for 2" HP



Flow-Tek®

A Subsidiary of BRAY INTERNATIONAL, Inc.
8323 N. Eldridge Pkwy #100 Houston, Texas 77041
832.912.2300 Fax: 832.912.2301
www.flow-tek.com

All statements, technical information, and recommendations in this
bulletin are for general use only. Consult Flow-Tek representatives
or factory for the specific requirements and material selection for
your intended application. The right to change or modify product
design or product without prior notice is reserved.

Flow-Tek® is a registered trademark of Flow-Tek, Inc.
© 2010 Flow-Tek, Inc.
F-2305_EN_TriadHP_2010-04

HOLDFAST

FLUID POWER

Forrestfield

657 Dundas Road,
Forrestfield WA 6058

Phone: 1300 HOLDFAST
Phone: (08) 9359 1795
Fax: (08) 9359 1792
Email: sales@holdfastaust.com.au

Broome

10/274 Port Drive,
Broome WA 6725

Phone: 1300 HOLDFAST
Phone: (08) 9192 6007
Fax: (08) 9192 6067
Email: salesnw@holdfastaust.com.au

Naval Base

1/27 Dooley Street
Naval Base WA 6165

Phone: 1300 HOLDFAST
Phone: (08) 9410 0716
Fax: (08) 9410 1152
Email: sales2@holdfastaust.com.au

1300 HOLDFAST