



AIR-OPERATED DOUBLE DIAPHRAGM PUMPS

Best choice for moving diesel, new or used lubricants coolants or oily waters easily and quickly. Great tool for any workshop.


macnaught
advantage

MACNAUGHT AIR-OPERATED DOUBLE DIAPHRAGM PUMPS

Polypropylene models can also be used for non-aggressive water-based Chemicals and Solvents such as degreasers and parts-washing fluids.

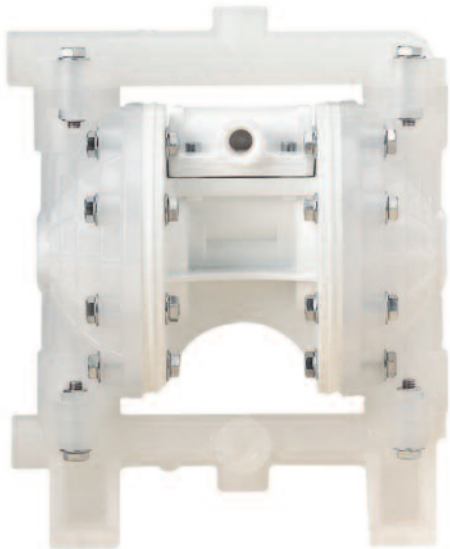
Aluminium models are offered in the larger sizes for those bigger, more rugged demands.

The pumps have the unique design of a easily replaced or removable air valve offering quick turnaround for either repair or replacement reducing maintenance costs and pump downtime.

With sizes from 1/2" to 2" the range offers a model for most applications.

Diaphragm pumps have the unique feature of being easy to prime and can even run dry during this priming process. Also you can adjust the flow output by controlling the air supply to the pump.

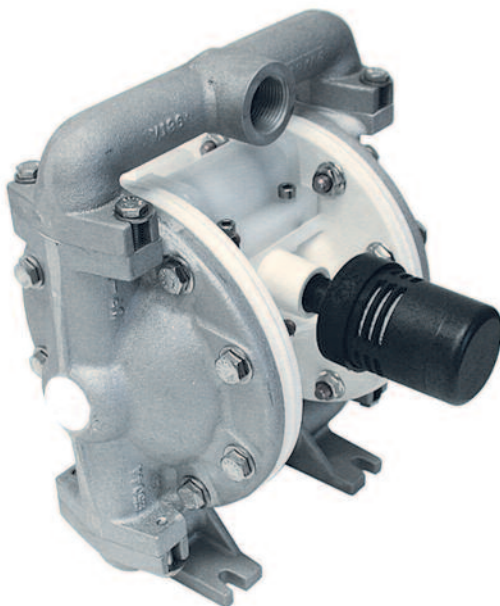
DDP13 — 1/2" ported Polypropylene model



Features

1/2" NPT ports (inlet & outlet)
3/8" Air Inlet
Flow Rate up to 42 l/min (viscosity dependant)
Maximum Air Pressure 690kPa (100psi)
Wetted Materials -
Body - Polypropylene
Seats - Polypropylene
Check Valves - Acetal
Diaphragms - Buna N
Suction lift
Dry 3.6m (max)
Wet 9.1m (max)
Maximum Solid Size 1.6mm dia
Weight 3.7kg (shipping)
Warranty 2 years*

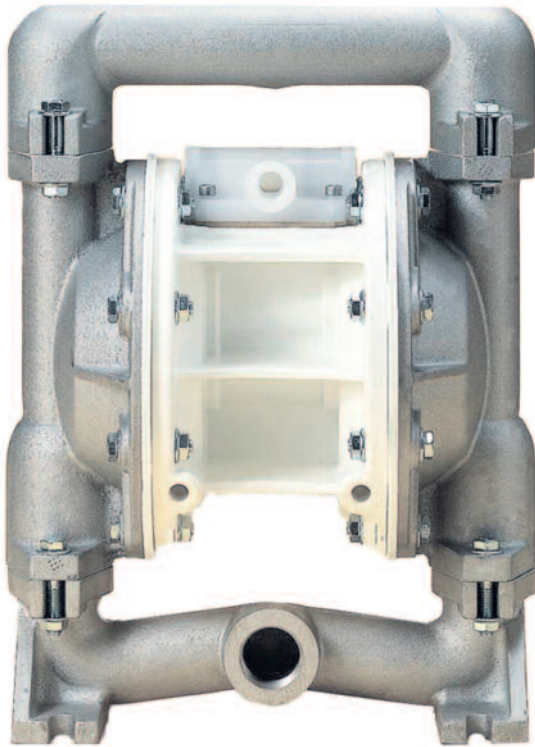
DDP19 — 3/4" ported Polypropylene & Aluminium model



Features

3/4" NPT ports (inlet & outlet)
3/8" Air Inlet
Flow Rate up to 45 l/min (viscosity dependant)
Maximum Air Pressure 690kPa (100psi)
Wetted Materials -
Body - Aluminium & Polypropylene
Seats - Aluminium
Check Valves - Acetal
Diaphragms - Buna N
Suction lift
Dry 3.9m (max)
Wet 6.7m (max)
Maximum Solid Size 1.6mm dia
Weight 4.5kg (shipping)
Warranty 2 years*

DDP25 — 1" ported Polypropylene & Aluminium model



Features

1" BSP ports (inlet & outlet)
3/8" Air Inlet
Flow Rate up to 174 l/min (viscosity dependant)
Maximum Air Pressure 690kPa (100psi)
Wetted Materials -
Body - Aluminium & Polypropylene
Seats - Aluminium
Check Valves - Acetal
Diaphragms - Buna N
Suction lift
Dry 4.9m (max)
Wet 9.4m (max)
Maximum Solid Size 3.2mm dia
Weight 9.65kg (shipping)
Warranty 2 years*

DDP38 — 1.5" ported Cast Aluminium model



Features

1.5" NPT ports (inlet & outlet)
1/2" Air Inlet
Flow Rate up to 265 l/min (viscosity dependant)
Maximum Air Pressure 690kPa (100psi)
Wetted Materials -
Body - Aluminium
Seats - Buna N
Check Valves - Buna N
Diaphragms - Buna N
Suction lift
Dry 4.6m (max)
Wet 7.1m (max)
Maximum Solid Size 4.76mm dia
Weight 16.8kg (shipping)
Warranty 2 years*

MACNAUGHT AIR-OPERATED DOUBLE DIAPHRAGM PUMPS

DDP50 — 2" ported Cast Aluminium model



Features

2" NPT ports (inlet & outlet)	
1/2" Air Inlet	
Flow Rate up to 598 l/min (viscosity dependant)	
Self-priming for easy drum changeover	
Maximum Air Pressure 690kPa (100psi)	
Wetted Materials -	
Body	- Aluminium
Seats	- Buna N
Check Valves	- Buna N
Diaphragms	- Buna N
Suction lift	
Dry	5.2m (max)
Wet	9.8m (max)
Maximum Solid Size 6.4mm dia	
Weight 29.8kg (shipping)	
Warranty 2 years*	

Macnaught Pty Ltd
41-49 Henderson St, Turrella
Sydney NSW 2205 Australia
Ph: +61-2-9567 0401
Fax: +61-2-9597 7773
email: info@macnaught.com.au



macnaught.com.au

macnaught
advantage

*2 Year Warranty - This product is offered with a conditional 2-Year warranty against defects on manufactured components (housings, manifolds, etc). Wear items such as diaphragms, check valves & seats, o-rings & seals are naturally only covered for 12 months, maximum. Any components are naturally subject to normal wear & tear and fluid compatibility to be considered for any warranty claim.

Quality and environment endorsement is applicable to Macnaught Head Office Sydney only. MP157.

HOLDFAST

FLUID POWER

Forrestfield

657 Dundas Road,
Forrestfield WA 6058

Phone: 1300 HOLDFAST
Phone: (08) 9359 1795
Fax: (08) 9359 1792
Email: sales@holdfastaust.com.au

Broome

10/274 Port Drive,
Broome WA 6725

Phone: 1300 HOLDFAST
Phone: (08) 9192 6007
Fax: (08) 9192 6067
Email: salesnw@holdfastaust.com.au

Naval Base

1/27 Dooley Street
Naval Base WA 6165

Phone: 1300 HOLDFAST
Phone: (08) 9410 0716
Fax: (08) 9410 1152
Email: sales2@holdfastaust.com.au

1300 HOLDFAST