

Banlaw LubeCentral™





Banlaw's LubeCentral™ receivers and BEC

Banlaw LubeCentral™

Control contamination, reduce wear and manage your fluid assets with Banlaw LubeCentral™

Our LubeCentral™ range of couplings is designed to fill and evacuate a wide range of fluids. This helps all heavy industries, including mining and rail businesses that want to service key equipment cleanly, and quickly. LubeCentral™ products have been specifically created for the job.

They avoid contamination and cross-contamination of fluids, and maximise flow rates due to engineering design focused on optimising the fluid path.

Banlaw LubeCentral™ is a robust range of fluid couplings engineered

to safely and efficiently transfer oils, grease and coolants in heavy industrial environments. The nozzles contain an industry standard ball-lock latching system for a stronger lock connection, as well as "Dry Break" technology to eliminate spillage.

The nozzles and mating receivers contain an industry standard ball-lock latching system for a stronger lock connection, as well as 'dry break' technology to eliminate spillage.



Benefits of Banlaw LubeCentral™

Flush Face to Minimise Contamination

Both the nozzle and mating receivers are a Flush Face design, without the traditional deep recesses to trap harmful contamination between mating fittings. This minimises the extent of contamination entering the fluid stream during servicing and reduces wear on mating seals and other components within the fittings.

Colour Coded

Each set is uniquely colour coded to assist the operator in identifying mating fittings. Only paired nozzles and receivers will connect.

Higher Flow Capability to Provide More Efficient Service Intervals

Banlaw's LubeCentral™ fittings offer excellent flow rates due to sound engineering design focused on the internal fluid flow path. Common threaded connection sizes are available in sizes 3/4" all the way up to 1-1/4" NPT.

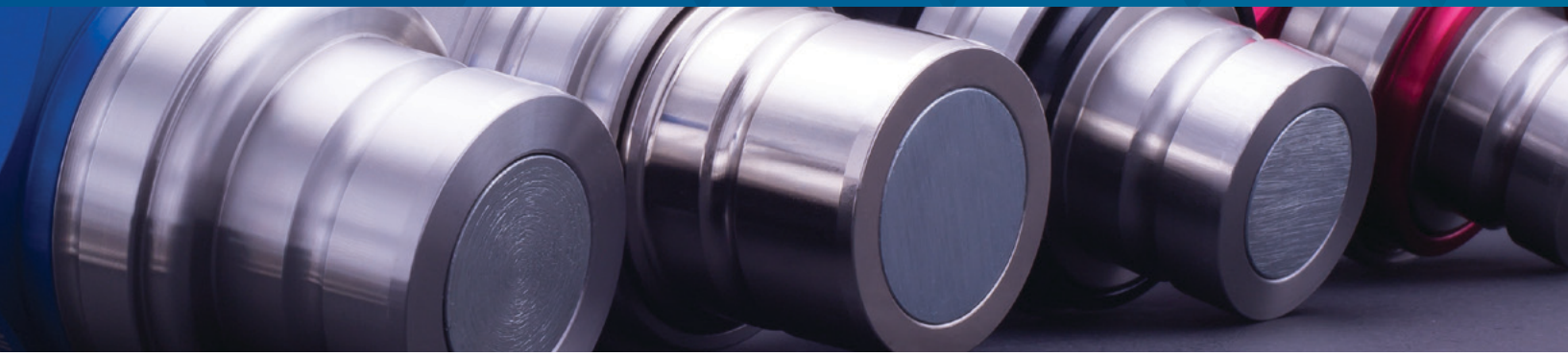
Push-to-Connect

Without the need to manually retract the nozzle actuating collar during connection, the operator needn't struggle to ensure proper engagement of the fittings.

Banlaw Durability

The entire LubeCentral™ range is 'designed for the job'. It retains the recognisable Banlaw features including secure ball-lock latching mechanisms and rugged zinc electroplated steel construction of vital parts. This maximises the working life of each fitting and provides a safer work environment for the operator, even in harsh environments.





Banlaw LubeCentral™ Flush Face Range

Mitigate contamination from site-related dirt and fluid cross-contamination

The combination of aligned mating surfaces and heavy duty dust caps in Banlaw's Flush Face range drastically reduces premature component wear.

Each size fitting is unique and colour coded to prevent accidental connection. This stops cross contamination between differing fluid types. It is impossible to connect couplings which are not paired. The Flush Face coupling is designed to enable the operator to wipe the coupling faces clean before connecting the transfer hose.

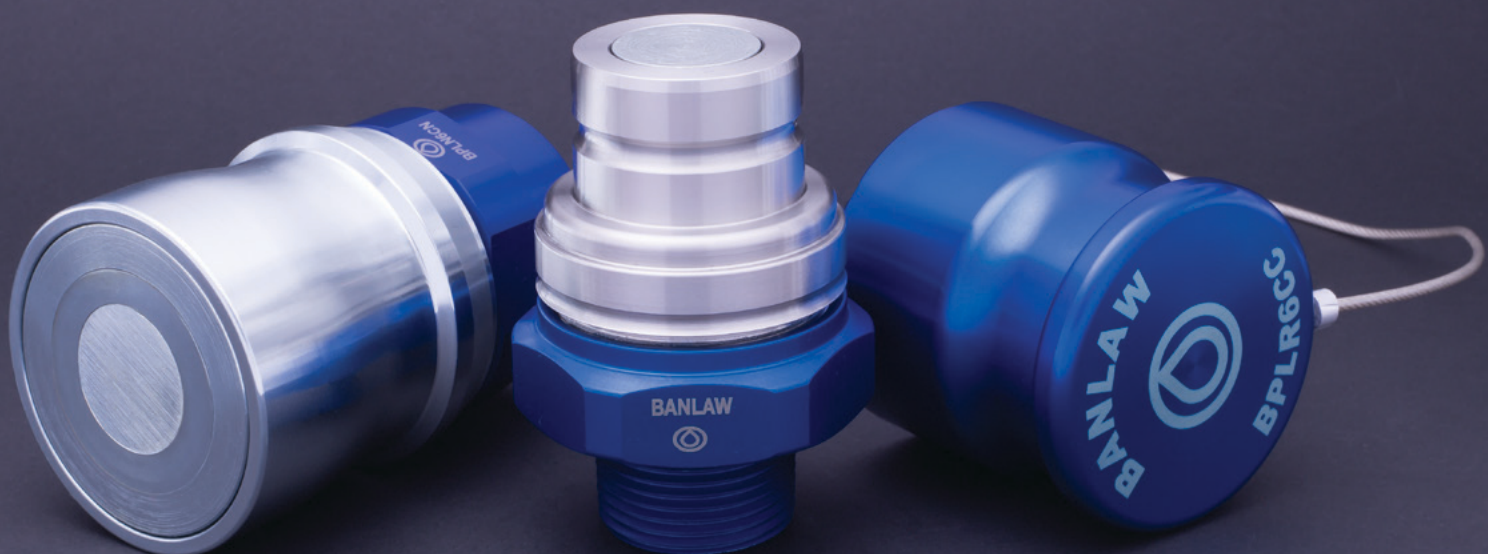
No exposed deep recesses means that only clean oil, grease or other fluid is transferred from the service unit to the machine.

The Flush Face range has a push-to-connect system that makes them simple and easy to use.

To reduce service times, our Flush Face range should be combined with the Banlaw Evacuation Coupling (BEC). The Banlaw Evacuation Coupling can connect with all receivers in the Flush Face range, aside from the size 0.

Each nozzle and receiver is supplied with a matching aluminium cap, to reduce wear and contamination.

Banlaw's range of Flush Face couplings extends the capital life of equipment and reduces service times.



Connect-Under-Pressure Coupling

The Size 11 nozzle and receiver in our Flush Face range was specifically designed to connect whilst the transfer line is subjected to residual line pressure. It can be used with oils and other fluids used in mining, rail, ports and other heavy industries.

Banlaw's Size 11 Flush Face receiver is fabricated from high tensile steel, and case-hardened with nickel electroless plating to extend product life when used under heightened pressures.

Size
11



For fluid transfer with extra strength.

Banlaw Micro Flush Face Coupling

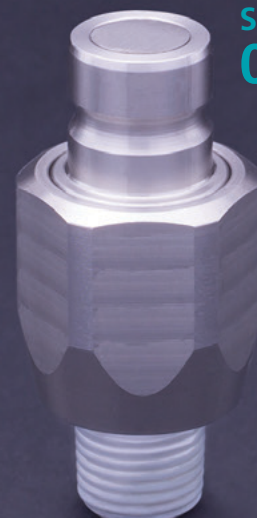
Banlaw's Size 0 receiver and nozzle combination is the smallest in the flush face range. The Size 0 is perfect for a range of applications where a larger set of couplings would not be required or appropriate, such as:

- ▶ Dosing
- ▶ Withdrawing product samples for analysis
- ▶ Introducing specialised equipment to a system for analysis
- ▶ Use as a temporary pressure tap for pipeline analysis

100% stainless steel construction of all metal components ensure that the receiver is not prone to corrosion. The Size 0 receiver and nozzle are durable items that can be placed into any system and can be ready to use even after long periods of neglect.

The Size 0 receiver does not couple with the Banlaw Evacuation Coupling.

Size
0



For specialist applications such as uniform sampling.

Banlaw LubeCentral™ Flush Face range

| Size | Colour | Pressure | | | | BEC Compatible | Part Number | Thread (NPT) |
|------|----------------|------------|------|--------------|-------|----------------|-------------|--------------|
| | | Nozzle SWP | | Coupling SWP | | | | |
| | | MPa | psi | MPa | psi | | | |
| 0 | Silver (steel) | 10 | 1450 | 10 | 1450 | ✘ | BPLR0 | ¼" BSP(M) |
| | | | | | | | BPLN0 | ¼" BSP (F) |
| 1 | Brass | 6.5 | 943 | 6 | 870 | ✔ | BPLR1AE | ½" (M) |
| | | | | | | | BPLR1BE | ¾" (M) |
| | | | | | | | BPLN1BN | ¾" (F) |
| | | | | | | | BPLN1CN | 1" (F) |
| 2 | Gold | 10 | 1450 | 8.75 | 1269 | ✔ | BPLR2BE | ¾" (M) |
| | | | | | | | BPLR2CE | 1" (M) |
| | | | | | | | BPLN2BN | ¾" (F) |
| | | | | | | | BPLN2CN | 1" (F) |
| 3 | Red | 6.75 | 979 | 8.75 | 1269 | ✔ | BPLR3BE | ¾" (M) |
| | | | | | | | BPLR3CE | 1" (M) |
| | | | | | | | BPLN3BN | ¾" (F) |
| | | | | | | | BPLN3CN | 1" (F) |
| 4 | Black | 6.5 | 943 | 7 | 1015 | ✔ | BPLR4BE | ¾" (M) |
| | | | | | | | BPLR4CE | 1" (M) |
| | | | | | | | BPLN4BN | ¾" (F) |
| | | | | | | | BPLN4CN | 1" (F) |
| 5 | Green | 7 | 1015 | 5 | 725 | ✔ | BPLR5BE | ¾" (M) |
| | | | | | | | BPLR5CE | 1" (M) |
| | | | | | | | BPLN5BN | ¾" (F) |
| | | | | | | | BPLN5CN | 1" (F) |
| 6 | Blue | 5 | 725 | 4.5 | 653 | ✔ | BPLR6CE | 1" (M) |
| | | | | | | | BPLR6DE | 1 ¼" (M) |
| | | | | | | | BPLN6CN | 1" (F) |
| | | | | | | | BPLN6DN | 1 ¼" (F) |
| 7 | Purple | 12.63 | 1832 | 8.88 | 1288 | ✔ | BPLR7BE | ¾" (M) |
| | | | | | | | BPLR7CE | 1" (M) |
| | | | | | | | BPLN7BN | ¾" (F) |
| | | | | | | | BPLN7CN | 1" (F) |
| 8 | Platinum | 11 | 1595 | 11.25 | 11.25 | ✔ | BPLR8BE | ¾" (M) |
| | | | | | | | BPLR8CE | 1" (M) |
| | | | | | | | BPLN8BN | ¾" (F) |
| | | | | | | | BPLN8CN | 1" (F) |
| 9 | Bronze | 11.75 | 1704 | 9.5 | 9.5 | ✔ | BPLR9BE | ¾" (M) |
| | | | | | | | BPLR9CE | 1" (M) |
| | | | | | | | BPLN9BN | ¾" (F) |
| | | | | | | | BPLN9CN | 1" (F) |
| 10 | Orange | 8.25 | 1197 | 11.25 | 11.25 | ✔ | BPLR10BE | ¾" (M) |
| | | | | | | | BPLR10CE | 1" (M) |
| | | | | | | | BPLN10BN | ¾" (F) |
| | | | | | | | BPLN10CN | 1" (F) |
| 11 | Silver (steel) | 10 | 1450 | 9.7 | 9.7 | ✔ | BPLR11BE | ¾" (M) |
| | | | | | | | BPLR11CE | 1" (M) |
| | | | | | | | BPLN11BP | ¾" (F) |
| | | | | | | | BPLN11CP | 1" (F) |

Legend:

SWP: Safe Working Pressure (maximum recommended working pressure)

Thread Style: All threads are NPT with the exception of Size 0 which are BSPT

Thread connection: All receivers are male (M) threads. All nozzles are female (F) threads.



Banlaw Evacuation Coupling

Rapid, no-spill evacuation of waste fluids

Banlaw's Evacuation Coupling (BEC) transforms waste fluid removal practices. Using just one BEC, service teams can connect to all the Banlaw Flush Face receivers from size 1 to size 11. Waste products are evacuated using a vacuum rather than gravity to reduce fluid removal times.

The BEC has a fluid-tight connection, which prevents spillage during the evacuation process. It is dry-break, and incorporates a dependable ball-lock latching

mechanism. As with the entire LubeCentral™ range, the BEC fluid path is optimised for higher transfer rates.

Banlaw's Evacuation Coupling can be connected and disconnected while the vacuum pump remains running. Additionally, the BEC includes patent (pending*) safety features. It cannot be disconnected while the internal valve is open, and will not allow reverse flow. No waste products can be mistakenly pumped back into your machines with a BEC.

*Patent Pending AU2015900519



Banlaw LubeCentral™ Classic Range

Banlaw's Classic range of couplings has been proven in some of the world's harshest environments for over 20 years. Today the classic range is still relevant, and is the desired choice where the use of non-ferrous metals is not permitted, or where cross compatibility with some non-Banlaw couplings is required.

Banlaw's Classic range is heavily utilised for many underground fluid transfer applications. Each of the nozzles

and receivers in the range is available in various threaded tail sizes and types.

A unique coupling is provided for each oil, grease or coolant type, eliminating the possibility of cross-contamination. We recommend the use of plugs and caps to reduce wear and contamination. There is a matching cover available for each nozzle and receiver.

| Type | Pressure | | | | Basic Fitting Part Number | Tailpiece Part Numbers | | |
|-----------------|----------|------|--------------|------|---------------------------|------------------------|----------|-------------|
| | SWP | | Coupling SWP | | | 1/2" NPT | 3/4" NPT | 1-1/16" JIC |
| | MPa | psi | MPa | psi | | | | |
| Crankcase | 10 | 1450 | 4.75 | 690 | AUS27W | 27W-B | STD | 27WB/H |
| | 3 | 435 | | | AUS29W | 29W-B | STD | 29WB/H |
| | 3 | 435 | | | AUS29L | 29L-B | STD | 29LB/H |
| Transmission | 4.25 | 615 | 11.5 | 1670 | AUS32W | 32W-B | STD | 32WB/H |
| | 10 | 1450 | | | AUS33W | STD | - | 33WB/H |
| Hydraulic | 10 | 1450 | 4 | 580 | AUS34A | * | STD | 34AB/H |
| | 10 | 1450 | | | AUS41A | * | STD | 41AB/H |
| Coolant | 10 | 1450 | 7.5 | 1090 | AUS36A | 36A-B | STD | 36AB/H |
| | 10 | 1450 | | | AUS37W | STD | - | 37WB/H |
| Push-to-connect | 10 | 1450 | 10 | 1450 | AUS38W | * | STD | 38WB/H |
| | 1.5 | 217 | | | AUS39W | * | STD | 39WB/H |
| Alternative | 6 | 870 | 2.5 | 365 | AUS80A | - | - | - |
| | 2.5 | 365 | | | AUS81A | - | - | - |
| One Way Valve | ** | ** | N/A | N/A | AUS3W | N/A | N/A | N/A |

Legend:

SWP: Safe Working Pressure (maximum recommended working pressure)

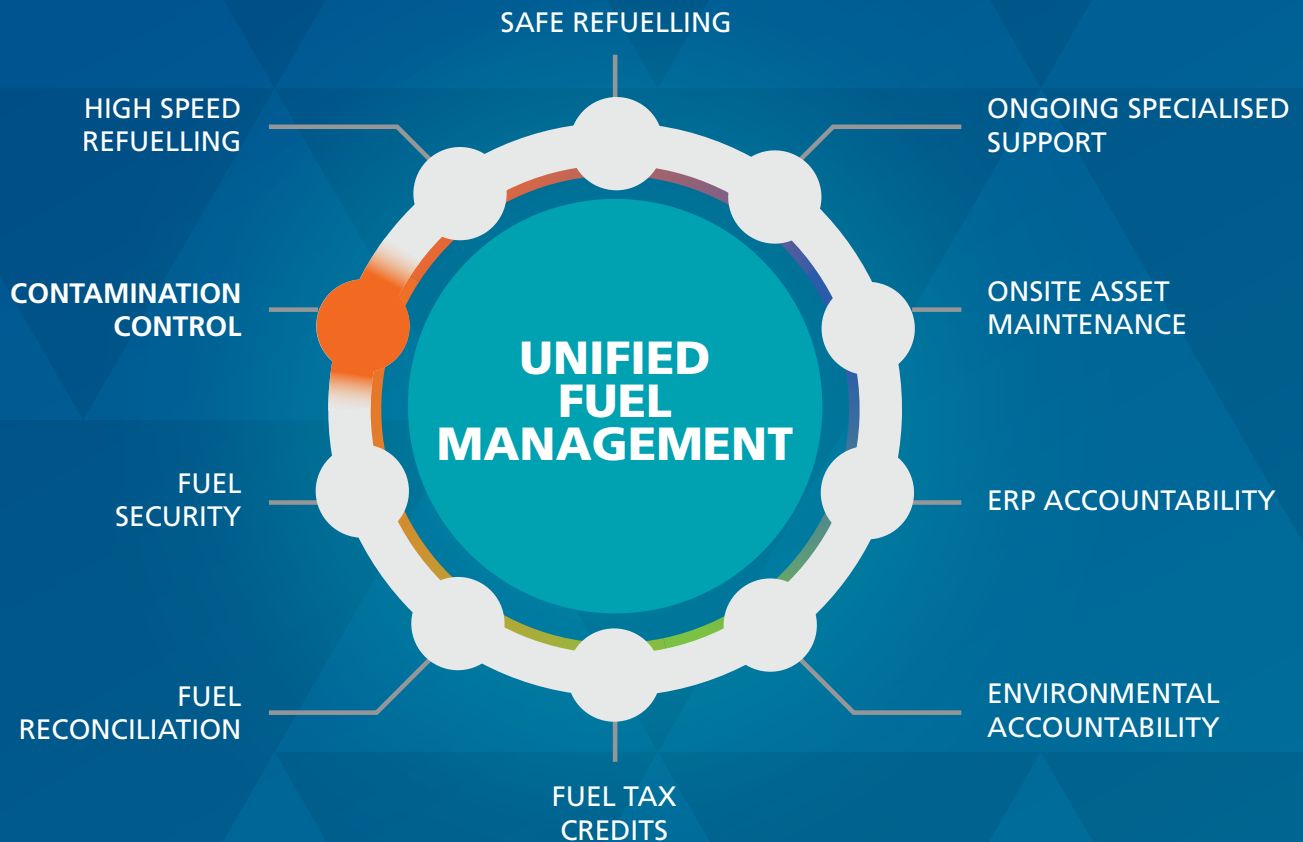
STD: supplied as standard – option not applicable

* Not standard product – but can be supplied on request

** Contact Banlaw

Banlaw's LubeCentral™ range is just part of our pioneering Unified Fuel Management process.

We have solutions to optimise fueling, lubrication and hydrocarbon management across your fleet. When combined and integrated, our Unified Fuel Management system delivers productivity, efficiency and cost reductions like no other.



Contact your Banlaw Distributor or sales representative for more information.

Forrestfield

657 Dundas Rd
Forrestfield
WA 6058 Australia
Phone 08 9359 1795
Email sales@holdfastaust.com

Broome

10/274 Port Dve
Broome
WA 6725 Australia
Phone 08 9192 6007
Email salesnw@holdfastaust.com

Naval Base

1/27 Dooley St
Naval Base
WA 6165 Australia
Phone 08 9410 0716
Email: sales2@holdfastaust.com.au

www.holdfastaust.com.au