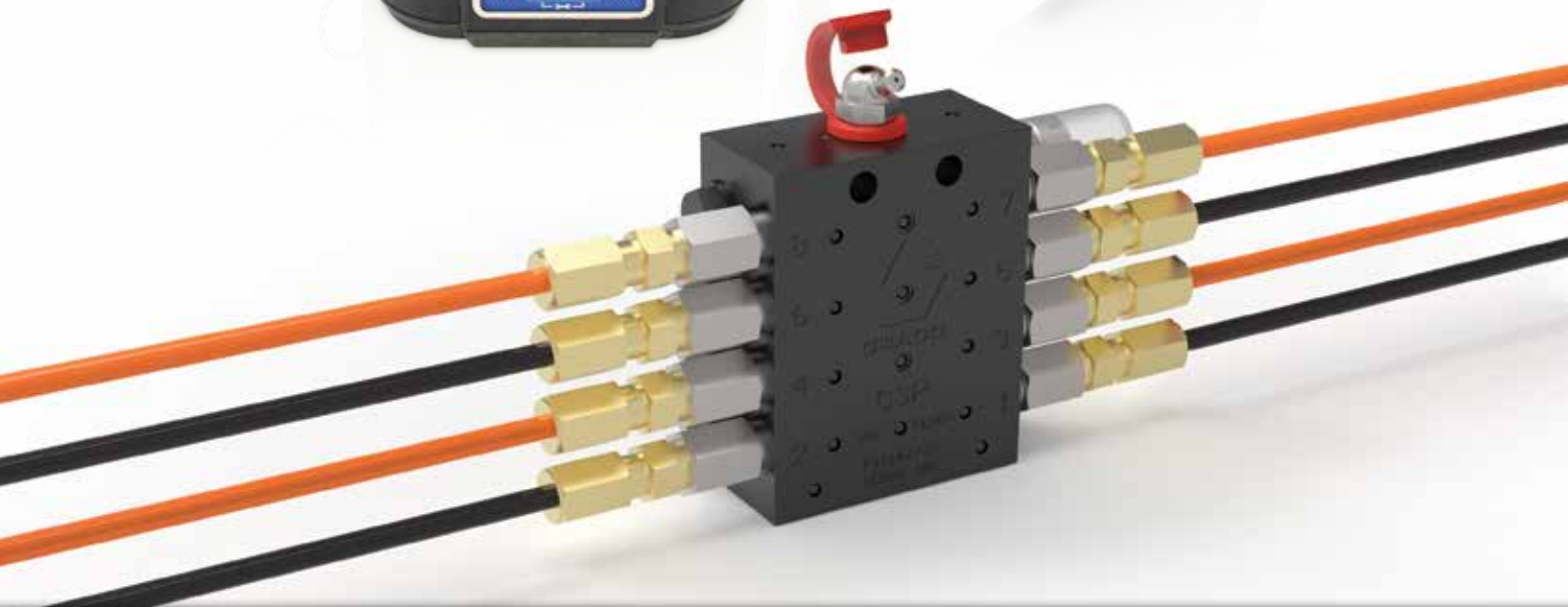


# Grease Jockey<sup>®</sup> Fleet Lubrication Solutions



Time-tested lubrication equipment –  
with you for the long haul.



PROVEN QUALITY. LEADING TECHNOLOGY.

# About Graco

Since 1926, Graco remains proud to offer best-in-class industrial fluid handling equipment. The road-proven Graco Grease Jockey family delivers on expectations for reliable, automatic grease dispensing, even in the tough environments demanded by mobile applications.



Synflex Pump – 1970s



Air Powered Grease Jockey Pump – 1990s



Air Powered Grease Jockey Pump – 2000s



Today

## Electric Grease Jockey

- On/off road mobile lubrication
- NLGI #2 grease compatible
- Low level warning
- Protects itself against motor burnout
- Easy to install and maintain

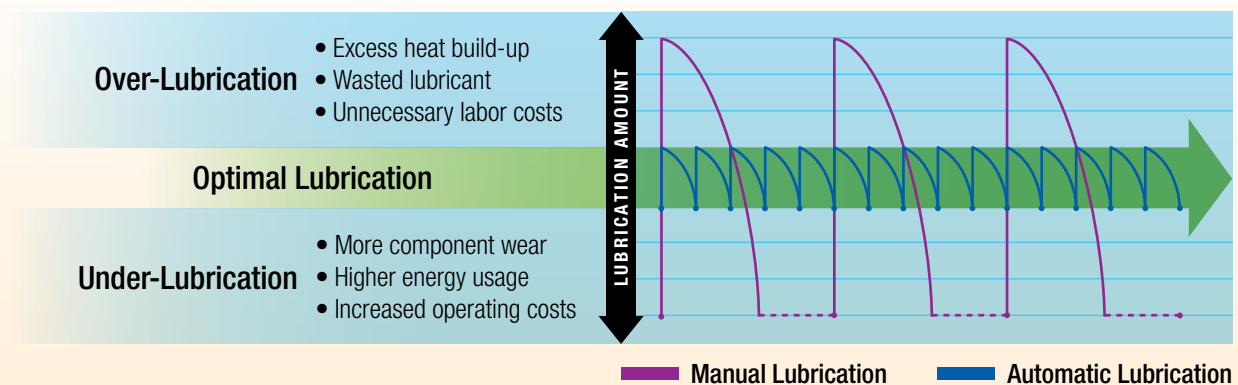
# Automatic Lubrication System Benefits

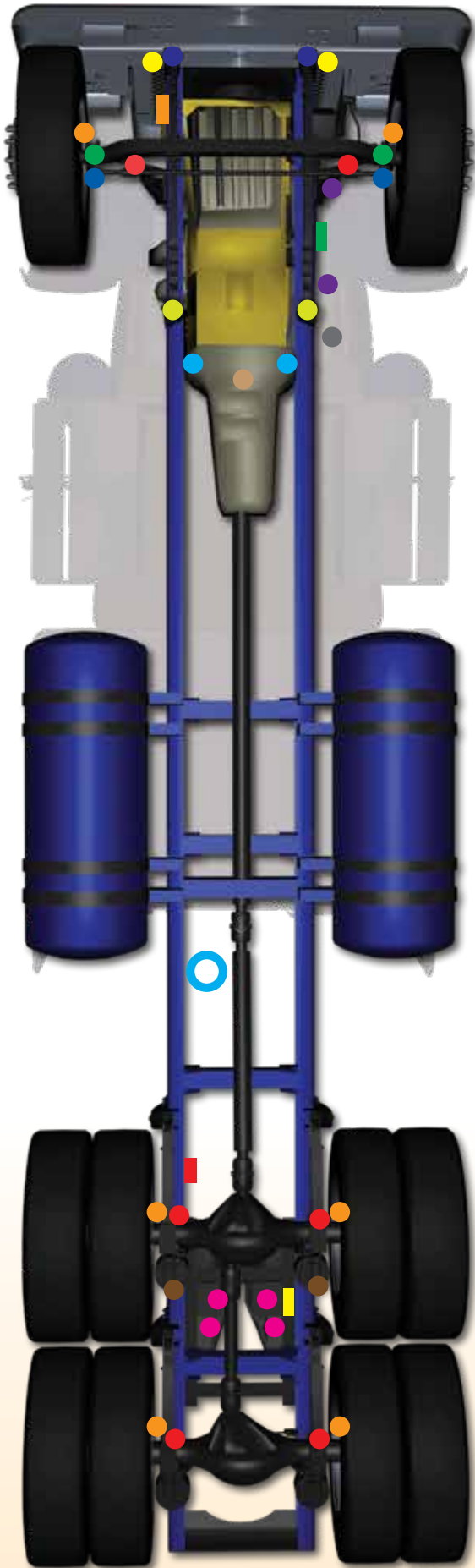
## Graco Grease Jockey increases fleet utilization

- **Extends component life up to four times**  
Automatic lubrication continuously flushes contaminants and reduces friction.
- **Supports 50,000 mile service intervals**  
Optimally lubricates when the vehicle needs it the most.
- **Reduces operating costs**  
Service more vehicles in less time.



## Graco automatic lubrication systems apply the correct amount of lubrication in the right place at the right time





## Truck and tractor lubrication systems lubricate these parts:

- Upper King Pins
  - Lower King Pins
  - Hood Pins
  - Spring Pins
  - Drag Links
  - Tie Rod Ends
  - Slack Adjusters
  - S-Cams
  - Spring Hangers
  - Clutch Pedal
  - Clutch Cross Shafts
  - Clutch Throw Out Bearing
  - 5th Wheel Plate
  - 5th Wheel Pivots
- 
- Pump
  - Right Front Module
  - Left Front Module
  - Rear Module
  - 5th Wheel Module

Whatever you drive,  
there's a Graco system  
to fit your needs



# Electric Grease Jockey



## Ruggedized Construction

U.V., chemical, and high-impact resistant – rigorously tested and field-proven.

## NLGI #2 Compatible

NLGI #000 to #2 and 2,000 psi (138 bar).

## Low Level Signal

Alerts when out of grease.

## Electrical Drive

12 VDC (7 Amp) or 24 VDC (4 Amp) power. Protected against motor burn-out.

## Data Management System\*

Track critical lubrication data. Fast programming.

## Integrated Controls

Includes adjustable ON/OFF times, PIN code lockout and on-panel alerts.

## In-Cab Feedback\*

Tri-color LED system feedback indicator with Manual Run button.



\*DMS version optional equipment

## Technical Specifications

Maximum Pressure	2,000 psi (352 bar)
Power	12 VDC, 24 VDC
Operating Temperature	-40° F to 158° F (-40° C to 70° C)
Reservoir Size	2 liter
Maximum Run Time	30 minutes
Output per Element/Min	0.5 in <sup>3</sup> (8 cm <sup>3</sup> )
Certifications/Standards	IP69K, CE, ROHS, EMC, Pressurized Equipment Directive, National Fluid Power Association
Instruction Manual	3A5082

## Ordering Information

### Electric Grease Jockey Pump Packages

	Package Number	25C990	25C991	25C992	25C993
Package Includes	Pump	24Z764	24Z959	24Z660	24Z958
	Power	12V	24V	12V	24V
	Data Management System	–	–	Yes	Yes
	Power Cable	129644	129644	127782	127782
	Manual Run Button	–	–	25C981	25C982




## Electric Grease Jockey System Installation Kits

Semi-Tractor Includes 5th Wheel	Semi-Tractor with Greaseable Spring Pins			Semi-Tractor with Sealed Spring Pins (non-greaseable)		
	Drum Brakes		Disc Brakes	Drum Brakes		Disc Brakes
	6 x 4 Tandem Axle	4 x 2 Single Axle		6 x 4 Tandem Axle	4 x 2 Single Axle	
	32 Point / 4 Module Kit	28 Point / 3 Module Kit	20 Point / 3 Module Kit	26 Point / 4 Module Kit	22 Point / 3 Module Kit	14 Point / 3 Module Kit
Package Number	25C971	25C972	25C973	25C974	25C975	25C976
12 VDC Grease Jockey pump	25C990			25C990		
18 ft (5.5 m) mainline section/installable end kit	17S970			17S970		
12 ft (3.7 m) mainline section/installable end kit	17S969			17S969		
6 ft (1.8 m) mainline section/installable end kit (qty)	17S968 (2)	17S968 (1)	17S968 (1)	17S968 (2)	17S968 (1)	17S968 (1)
Mainline tee (qty)	129759 (3)	129759 (2)	129759 (2)	129759 (3)	129759 (2)	129759 (2)
Mainline elbow (qty)	129755 (2)			129755 (2)		
Front left meter module	25C854	25C854	25C857	25C858	25C858	25C849
Front right meter module	25C859	25C859	25C850	25C851	25C851	25C852
5th wheel meter module	25C853	25C855	25C853	25C853	25C855	25C853
Rear axle meter module	25C856		–	25C856		–
3/16 in to 1/8 NPT elbows, 10-Pack (qty)	25C977 (3)	25C977 (3)	25C977 (2)	25C977 (3)	25C977 (2)	25C977 (1)
3/16 in to 1/8 NPT straights, 10-Pack	25C978			25C978		
1/4-28 SAE to 1/8 NPT street elbows, 5-Pack	25C979			25C979		
Pump mounting bracket	25T767			25T767		
Zip ties, 100-count	17K063			17K063		
Zip ties, looped, 10-count (qty)	25C980 (3)	25C980 (2)	25C980 (1)	25C980 (3)	25C980 (2)	25C980 (1)

Straight Truck No 5th Wheel	Straight Truck with Greaseable Spring Pins			Straight Truck with Sealed Spring Pins (non-greaseable)		
	Drum Brakes		Disc Brakes	Drum Brakes		Disc Brakes
	6 x 4 Tandem Axle	4 x 2 Single Axle		6 x 4 Tandem Axle	4 x 2 Single Axle	
	26 Point / 3 Module Kit	22 Point / 3 Module Kit	14 Point / 2 Module Kit	20 Point / 3 Module Kit	16 Point / 3 Module Kit	8 Point / 2 Module Kit
Package Number	26A830	25T309	26A807	26A844	25T311	25T307
12 VDC Grease Jockey pump	25C990			25C990		
18 ft (5.5 m) mainline section/installable end kit	25D338*	17S970	17S970	25D338*	17S970	17S970
12 ft (3.7 m) mainline section/installable end kit		17S969	17S969		17S969	17S969
Mainline tee (qty)	129759 (1)	129759 (1)	129759 (1)	129759 (1)	129759 (1)	129759 (1)
Mainline elbow (qty)	129755 (3)	129755 (2)	129755 (2)	129755 (3)	129755 (2)	129755 (2)
Front left meter module	25C854	25C854	25C857	25C858	25C858	25C849
Front right meter module	25C859	25C859	25C850	25C851	25C851	25C852
Rear axle meter module	25C856	25D084	–	25C856	25D084	–
3/16 in to 1/8 NPT elbows, 10-Pack (qty)	25C977 (2)	25C977 (2)	25C977 (2)	25C977 (3)	25C977 (2)	25C977 (1)
3/16 in to 1/8 NPT straights, 10-Pack	25C978			25C978		
1/4-28 SAE to 1/8 NPT street elbows, 5-Pack	25C979			25C979		
Pump mounting bracket	25T767			25T767		
Zip ties, 100-count	17K063			17K063		
Zip ties, looped, 10-count (qty)	25C980 (1)	25C980 (1)	–	–	25C980 (1)	25C980 (1)

\*25D338 is a 36 ft (11 m) hose with JIC-6 fittings on each end, plus four field-installable JIC-6 fittings. Cut-to-length(s) to make three complete hoses.

## Electric Grease Jockey Pump Accessories

	Part Number	Description
	24Z962	Protective pump cover
	25T767	Mounting bracket
	25C983	Output doubling kit

# EZ Greaser™

The EZ Greaser assemblies allow you to grease many points from one fitting, shortening the amount of time spent greasing and offering a safer option. The pre-assembled units are compact and cost-effective, making them a great product when space is tight. Add an optional pump and controller for a centralized automatic lubrication system on your vehicle.

### Standard Adapter

Zerk fitting accepts standard grease gun.

### Positive Lube Cycle Indication

Cycle Indicator Pin provides visual indication of grease volume to ensure proper amount of lubricant.

### Customizable Configurations

Divider valve with pre-assembled tubes and fittings connect to lube points.

### Color-Coded Tubing

For easy installation and service.

### NLGI #2 Grease Compatible

Use with oil or grease up to NLGI #2.

### CSP Divider Valve

Meters amount of grease going to lube points.

### Truck Kit Ordering Information

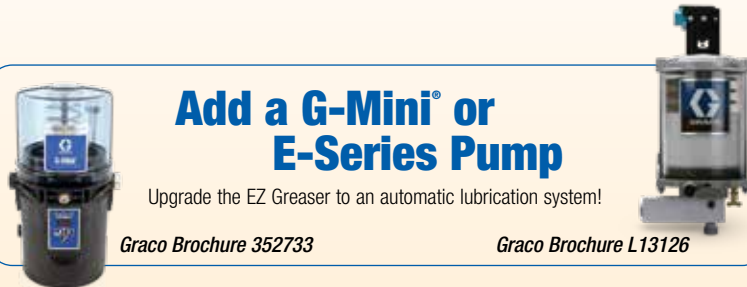
Package Number	Description	Slack Adjuster	S-Cam	King Pin	Tie Rod End	Drag Link	Spring Pin	Pivot Pin	5th Wheel Face Plate	Transmission	Cross Shaft
		Number of Grease Points									
25T380	Front Axle, 18 pt	2	2	4	2	2	6	-	-	-	-
25T381	Front Axle, 14 pt	-	-	4	2	2	6	-	-	-	-
25T382	Front Axle, 12 pt	2	2	4	2	2	-	-	-	-	-
25T383	Front Axle, 8 pt	-	-	4	2	2	-	-	-	-	-
25T386	Front Left or Right Dual Steering, 10 pt	1	1	2	1	2	3	-	-	-	-
25T384	Single Axle, 4 pt	2	2	-	-	-	-	-	-	-	-
25E870	Tandem Axle, 8 pt	4	4	-	-	-	-	-	-	-	-
25T388	Tandem Axle Dump, 10 pt	4	4	-	-	-	2	-	-	-	-
25T385	5th Wheel, 6 pt	-	-	-	-	-	-	2	4	-	-
25E872	Drop Axle, 10 pt	2	2	4	2	-	-	-	-	-	-
25T476	Transmission, 3 pt	-	-	-	-	-	-	-	-	1	2

### Trailer Kit Ordering Information

Package Number	Description	Slack Adjuster	S-Cam	Clevis Pin	Landing Gear
		Number of Grease Points			
25T387	Single Axle Trailer, 4-6 pt	2	2-4	-	-
25T391	Single Axle Trailer, 6-8 pt	2	2-4	2	-
25T389	Tandem Axle Trailer, 8-12 pt	4	4-8	-	-
25T392	Tandem Axle Trailer, 12-16 pt	4	4-8	4	-
25T390	Triple Axle Trailer, 12-18 pt	6	6-12	-	-
25T393	Landing Gear, 5 pt	-	-	-	5

### Accessories

Part Number	Description
17L651	Doubling plug. Plugs an unused outlet and pushes that grease to the next outlet below it.
25T482	Fill extension kit. Remote grease inlet kit allows you to pump grease from up to 10 ft (3 m) away from the metering valve.



## Add a G-Mini® or E-Series Pump

Upgrade the EZ Greaser to an automatic lubrication system!

Graco Brochure 352733      Graco Brochure L13126

# Grease Jockey Manifolds

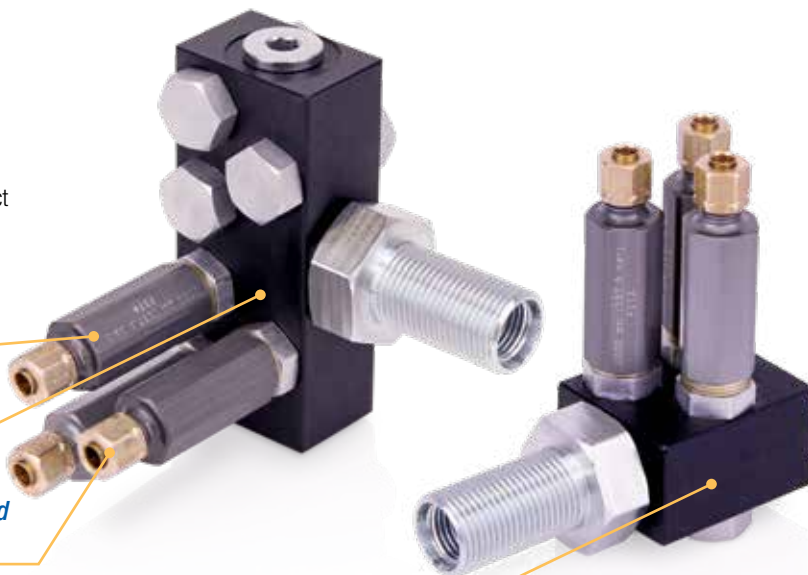
Grease Jockey modular design makes it easy to add or subtract lube points and commonize service parts across your fleet. Modules hold up to 6 or 12 lubrication point meters.

*Updated for NLGI #2 Grease*

*Multiple Mounting and Plumbing Options*

*Same Pre-Charged, Color Coded Lines and End-Point Fittings*

*12-Port And 6-Port Options*



## Ordering Information

### Build Your Own Module / Service Parts

Part Number	24Z682	24Z683	24Z684	24Z685	24Z686	24Z681
Grease Jockey Injector Size	#0	#1	#2	#3	#4	#8
Output Spacers	0	1	2	3	4	4
Dispense Amount in <sup>3</sup> (cm <sup>3</sup> )	0.002 (0.03)	0.005 (0.08)	0.009 (0.15)	0.012 (0.20)	0.015 (0.25)	0.026 (0.43)
Typical Truck/Trailer Lube Points	S-Cam, Clutch	Slack Adjuster, Pivot Pins	Tie-Rod End, Drag Link	King Pin, Spring Pin	5th Wheel Cylinders	5th Wheel Face Plate

Part Number	Description
25C988	6 port manifold and mounting stem
25C989	12 port manifold and mounting stem

Part Number	Description
15W165	Single tube, pre-charged, 30 ft
564090	Double tube bundle, pre-charged, 30 ft
563796	Triple tube bundle, pre-charged, 30 ft

## Grease Jockey System Accessories

### Expander Kit Accessories

Part Number	Description
25D012	Single, #3 injector and 15 ft, 3/16 in tube
25D013	Two, #3 injectors and 2-tube 15 ft, 3/16 in bundle
24Z808	Hex-head manifold plug with o-ring

### Grease Option

Part Number	Description
557941	NLGI #00 EP lithium grease, 35 lb bucket

### Refill Pump Kits

Part Number	Description
26A318	Fireball 225 35 lb bucket
26A319	Fireball 225 120 lb keg
26A320	Fireball 225 400 lb barrel
247886	35 lb hand pump

### Fill Extension Kit

Part Number	Description
25A170	Fill extension kit

## Contact us today!

To receive product information or talk with a Graco representative, call 800-533-9655 or visit us online at [www.graco.com](http://www.graco.com).

©2021 Graco Inc. 340540 Rev. H 1/21 All other brand names or marks are used for identification purposes and are trademarks of their respective owners. All written and visual data contained in this document are based on the latest product information available at the time of publication. Graco reserves the right to make changes at any time without notice. For more information on Graco's intellectual property, see [www.graco.com/patent](http://www.graco.com/patent) or [www.graco.com/trademarks](http://www.graco.com/trademarks).





# **HOLDFAST**

## **FLUID POWER**

### ***Forrestfield***

657 Dundas Road,  
Forrestfield WA 6058

P: (08) 9359 1795

F: (08) 9359 1792

E: [sales@holdfastaust.com.au](mailto:sales@holdfastaust.com.au)

### ***Broome***

10/274 Port Drive  
Broome WA 6725

P: (08) 9192 6007

F: (08) 9192 6067

E: [salesnw@holdfastaust.com.au](mailto:salesnw@holdfastaust.com.au)

### ***Naval Base***

1/27 Dooley Street,  
Naval Base WA 6165

P: (08) 9410 0716

F: (08) 9410 1152

E: [sales2@holdfastaust.com.au](mailto:sales2@holdfastaust.com.au)

# **1300 HOLDFAST**